

## Philadelphia Employment Providers

- AHEDD
- CATCH
- CIS
- COMHAR
- Elwyn
- Interac
- JEVS
- KenCrest
- Northeast
- PATH
- PDDC
- PEP
- SPIN
- St. John's
- TAIG
- UCPA
- WES

## Other Employment Resources

- **Office of Vocational Rehabilitation**  
(215)560-1900 Voice  
(800)442-6381 Voice  
(800)772-9031 TTY
- **Pennsylvania CareerLink**  
Jobseekers call (215) 557-2625 Voice  
Businesses call (215) 557-2665 Voice  
Employer Tax Incentive- (215) 557-2665
- **Liberty Resources** (215) 634-2000
- **Earnworks** (866)327-6669,TTY & Voice
- **Medical Assistance for Workers with Disabilities** (MAWD)  
(800)274-3258 Voice  
(866)236-6310 TTY
- **Disability Rights Network of PA**  
(215)238-8070 Voice  
(215)789-2498 TDD
- **Mayor's Commission on People with Disabilities** (215) 686-2762 Voice  
(215) 564-1782 TDD

*Employment Initiatives are produced in collaboration with the Philadelphia Department of Behavioral Health and Mental Retardation Services. Funding is provided by the Commonwealth Office of Developmental Programs (ODP).*

## Philadelphia Vision for Employment 2010

*Philadelphia Vision for Employment 2010 is a strategic planning effort designed to increase the number of people with mental retardation working in community businesses.*

### Steering Committee

Michael McAllister, Co-Chair  
(610) 935-6625  
Kathy Sykes, Co-Chair, (215) 685-5909

### Capacity Building Work Group

Teresa Myers-Thompson, Chair, (215) 685-5924

### Data Work Group

Leonard Kravitz, Chair, (215) 685-5976

### Public Relations Work Group

Ann Marie Campbell, Co-Chair, (215) 685-5980  
Karen Kenny, Co-Chair, (215) 685-5977  
Rosa McAllister, M.Ed., (610) 935-6627

### Supports Coordination Work Group

Marianne Roche, Co-Chair,  
(215) 685-5930  
Wanda Sabb, Co-Chair, (215) 685-5981

### Transition Work Group

Todd Handler, Chair, (215) 685-5952

### Who Wants to Work-Work Group

Shauna Roman, M.S., Chair, (215) 546-4112  
Michelle Sparling, (610) 935-6626

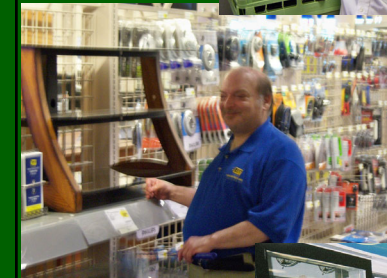


***We're On the Job!***

[www.philaonthejob.org](http://www.philaonthejob.org)

## Philadelphia Vision for Employment 2010

***We're On the Job!***



### Philadelphia Mental Retardation Services

701 Market Street, Suite 5200  
Philadelphia, PA 19106-1532

## Values and Beliefs

- All people with mental retardation are capable of working in community businesses.
- The first priority for people leaving school should be employment.
- Most adults in our culture have jobs and draw a measure of their identity from work.
- Jobs should match interests, ambitions, and preferences, including self-employment.
- People should have the support to maintain employment over time, have the opportunity for advancement, and change jobs and careers, as desired.
- People should be expected to work and achieve their maximum potential.
- All people who want to work should be given that opportunity.

The great danger for most of us is not that our aim is too high and we miss it. But that it is too low and we reach it.

- Michelangelo -

**Everyone Can Work !!!**

### Philadelphia Mental Retardation Services Fiscal Year 2006: Employment Data

- 655 people with mental retardation worked in community businesses
- Over \$3.4 million earned
- Averaging \$5,258 per worker

## Accessing Employment Services

### Role of Supports Coordinators

*What You Can Expect From Your Supports Coordinator in the Process of Employment.....*

- Discuss employment possibilities with individual and family.
- Facilitate on-going career and employment planning.
- Explain employment services and what to expect from an Employment Provider.
- Assist the person and his/her family in exploring and choosing an Employment Provider.
- Make a referral to an Employment Provider.
- Make a referral to OVR.
- Follow-up with Employment Provider to assure continuity and job satisfaction.

### The Employment Support Process

- **Assessment** – Exploring a person’s interests, skills, abilities, and preferred choices about employment.
- **Job Development** – Finding jobs that match individual preferences, interests, and choices.
- **Job Placement and Employment Support**—Finding the job and supporting the individual to be successful on that job, using accommodations or adaptations as needed.

## Why Choose Employment?

- Earn money
- Gain self-confidence
- Gain self-respect
- Earn the respect of others
- Meet new people
- Become a valued part of your Community
- Get the support you need to be successful
- Have income to buy what you need
- Explore your potential and realize your ambitions
- Learn new skills
- Be a part of the World of Work!

“Just as there are no little people or unimportant lives, there is no insignificant work.”

Elena Bonner

**We're On the Job !**

## For More Information

### Contact

#### **Leonard Kravitz**

Phone: 215-685-5976

E-mail: Leonard.Kravitz@phila.gov

#### **Teresa Myers-Thompson**

Phone: 215-685-5924

E-mail: Teresa.Myers@phila.gov

[www.phila.gov/dbhmrs](http://www.phila.gov/dbhmrs)